



Παγκόσμιος Ηγέτης στο **Ιδανικό** Κλίμα.

Αντλίες Θερμότητας



Κεντρικά γραφεία Βενιζέλου 5
Έκθεση Βενιζέλου 3 & Αριστείδου 40
55133 Καλαμαριά, Θεσσαλονίκη
Τ.2310440844

info@klimamichaniki.gr | www.klimamichaniki.gr



Daikin Altherma 3 M (4-6-8 kW)

The monobloc standard



Functional design

Daikin Altherma 3 M is the Daikin's first third generation monobloc, benefiting from a new design and using the R-32 refrigerant, also now available in 4, 6 and 8 kW.

A redesigned casing

The white front grille made of horizontal lines is hiding the fan from view, reducing the perception of the sound produced by the unit.

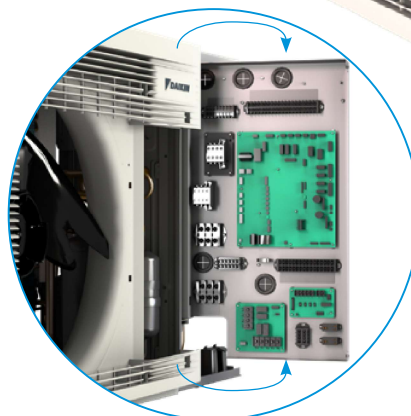
The light grey and seamless casing is slightly reflecting the environment where the unit is installed, helping it to blend in in any decor.

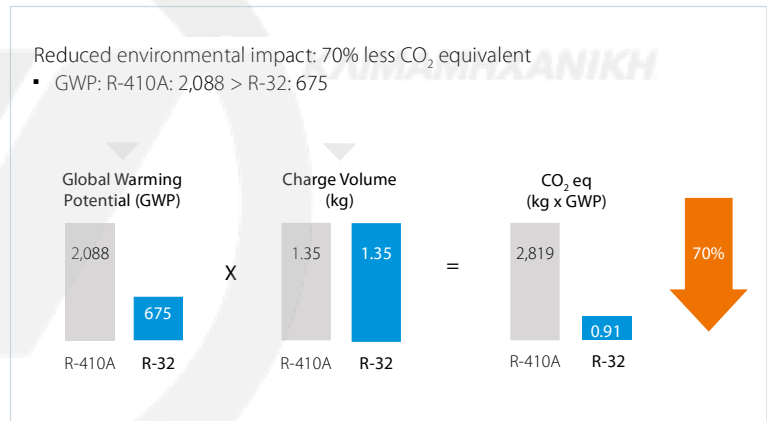
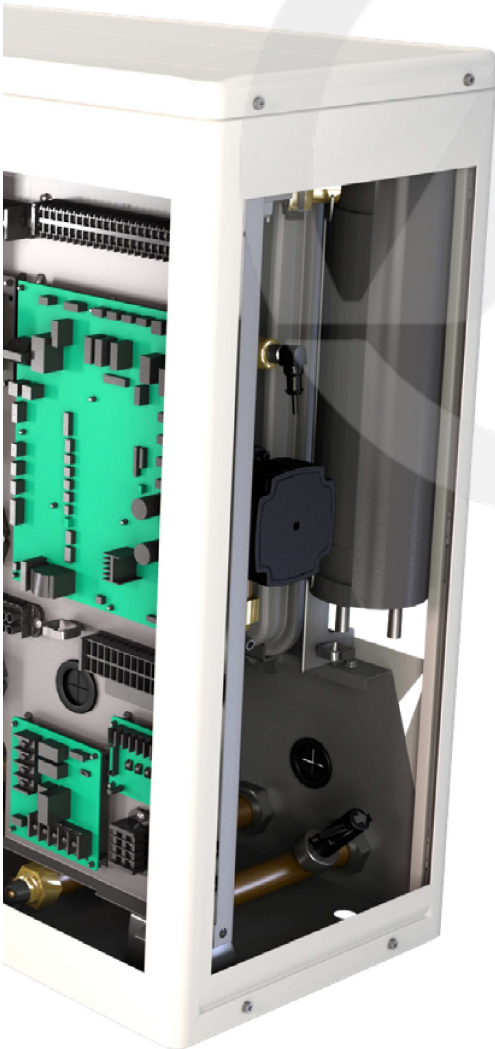
A renewed fan shape

The shape of the fan has been reviewed to reduce the contact surface with air and improve the air circulation.

Help installers and commissioning

- The rotary switchbox is a brand-new feature in this monobloc heat pump.
- It helps installers accessing the hydraulic and refrigerant components of the unit in an easy way.
- The service and commissioning can be then performed with ease.





R-32 monobloc **R-32** BLUEEVOLUTION

Daikin is a pioneer in launching heat pumps equipped with R-32. With a lower Global Warming Potential (GWP), the R-32 is equivalent in power to standard refrigerants, but achieves higher energy efficiency and lower CO₂ emissions.

Easy to recover and reuse, R-32 is the perfect solution for attaining the new European CO₂ emission targets.

A simple solution to space limitation

Thanks to the monobloc set-up, no indoor unit is required which helps when space is limited inside. The monobloc can even fit under a window!

The monobloc also gets its power from inside: all hydraulic components are integrated in one unit, including the sealed refrigerant circuit: no need for refrigerant handling or F-gas qualifications

Fully connected control

The Daikin Altherma 3 M is equipped with the most intuitive control solutions.



Heating and cooling emitters

Daikin Altherma 3 M works perfectly with various emitters, including fan coils, underfloor heating and heat pump convectors.



Cloud ready with WLAN



reddot award 2018
winner



DESIGN
AWARD
2018

Onecta app, with voice control

- Control the heating system from home or remote via smartphone
- Control the heating system with the voice
- Include integrations with Google Assistant and Amazon Alexa
- Featuring other functions: scheduling and holiday mode, control multiple units and boosting mode, monitoring energy consumption...

Madoka: a user-friendly wired room thermostat

- Sleek and elegant design
- Intuitive touch button control
- Three colours to match any interior (white, black and silver-grey)
- Compact unit measuring only 85 x 85 mm

Domestic hot water production

The monobloc combines with stainless steel tanks (EKHWS(P)-D), thermal stores and panels (EKHWP) to provide domestic hot water quickly.



Man-Machine Interface (MMI)

Inspired by the award-winning design of the Daikin Altherma 3 indoor units, Daikin also upgraded this controller to deliver an even more user-friendly interface.



Quick configuration

After logging in, you'll be able to configure the unit with the new controller in less than 10 steps. You can even check if the unit is ready to use by running test cycles.

Easy operation

The new interface features a few buttons and 2 navigational knobs to help you quickly set the room temperature and control units.

User-friendly design

The interface features an intuitive design. The high contrasted colour screen delivers stunning and practical visuals for both installers and service engineers.

WLAN cartridge connection



Small dimensions for a discreet unit:
136 x 160 x 37 mm (HxWxD)

Consistent compactness

Daikin Altherma 3 M is the most compact heat pump solution, as it only consists of one outdoor unit only. This is therefore ideal for limited space.

✓ Strengthened performances

The Daikin Altherma 3 M shows improved performances as well as a wide product range

- Space heating up to 
- Domestic hot water up to 
- Operating down to -25°C
- Delivers LWT 55°C at -15°C without back-up heater
- Suitable for small new buildings, or system replacement

✓ Extended product range

- Heating only models (EDLA*)
- Reversible models providing cooling (EBLA*)
- One-phase models only
- Back-up heater less models (EB/DLA-EV3)
- Plug & play integrated back-up heater models (EB/DLA-E3V3)
- Available in 4, 6 and 8 kW
- Completing the existing range of 9, 11, 14 and 16 kW

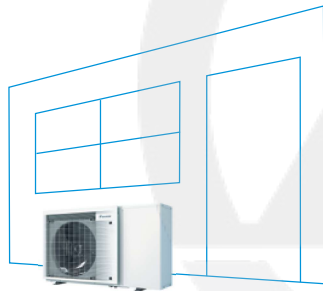
✓ Flexibility in domestic hot water production

- Combination with stainless steel domestic hot water tank (EKHWS(P)(U)-D)
- Combination with ECH₂O thermal store EKHWP-(P)B to provide domestic hot water with support from the sun

✓ Perfect match with any heat emitters

- Combination with underfloor heating applications
- Combination with heat pump convectors Daikin Altherma HPC

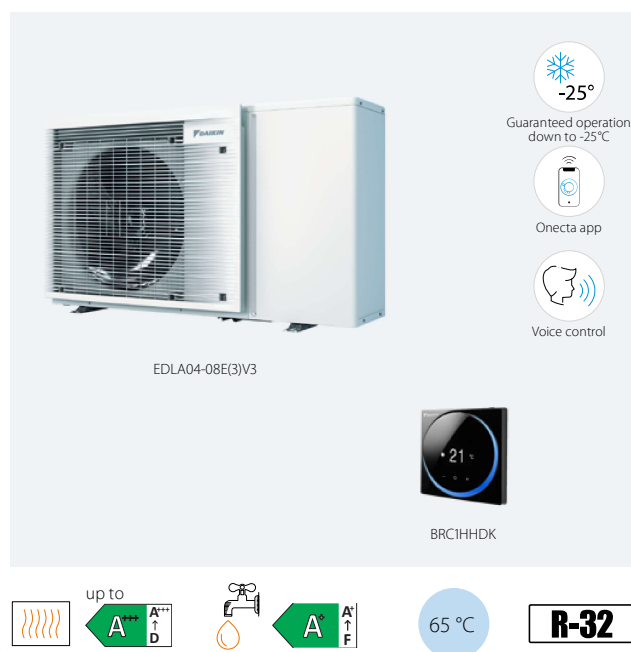
✓ Fits under a window





Daikin Altherma 3 M

Air-to-water monobloc system that provides **heating, domestic hot water and optionally cooling**. Ideal for limited installation space.

- WLAN cartridge connection standard included
- Possible to combine with domestic hot water tanks
- Heating only or reversible models available
- Monobloc all-in-one concept including all hydraulic parts
- Optional plug & play integrated 3 kW electric back-up heater
- Available in one phase



Single Unit				EDLA04E(3)V3	EBLA04E(3)V3	EDLA06E(3)V3	EBLA06E(3)V3	EDLA08E(3)V3	EBLA08E(3)V3	
Heating capacity	Nom.			kW	4.30 (1)/4.60 (2)	4.30 (1)/4.60 (2)	6.00 (1)/5.90 (2)	6.00 (1)/5.90 (2)	7.50 (1)/7.90 (2)	7.50 (1)/7.80 (2)
Power input	Heating	Nom.		kW	0.84 (1)/1.26 (2)	0.84 (1)/1.26 (2)	1.24 (1)/1.69 (2)	1.24 (1)/1.69 (2)	1.63 (1)/2.23 (2)	1.63 (1)/2.23 (2)
COP					5.10 (1)/3.65 (2)	5.10 (1)/3.65 (2)	4.85 (1)/3.50 (2)	4.85 (1)/3.50 (2)	4.60 (1)/3.50 (2)	4.60 (1)/3.50 (2)
Cooling capacity	Nom.			kW	-	4.86 (1)/4.52 (2)	-	5.83 (1)/5.09 (2)	-	6.18 (1)/5.44 (2)
Power input	Heating	Nom.		kW	-	0.82 (1)/1.36 (2)	-	1.08 (1)/1.55 (2)	-	1.19 (1)/1.73 (2)
EER					-	5.91 (1)/3.32 (2)	-	5.40 (1)/3.28 (2)	-	5.19 (1)/3.14 (2)
 Space heating	Average climate water outlet 55 °C	General	ηs (Seasonal space heating efficiency)	127	129	127	128	130	131	
			SCOP	3.26	3.29	3.26	3.28	3.32	3.35	
	Average climate water outlet 35 °C	General	ηs (Seasonal space heating efficiency)	176	179	176	178	179	181	
			SCOP	4.48	4.54	4.47	5.52	4.56	4.61	
			Seasonal space heating eff. class							
Casing	Colour			Ivory white						
	Material			Zinc coated low carbon steel						
Dimensions	Unit	HeightxWidthxDepth		mm	770x1,250x362					
Weight	Unit			kg	EV3: 88, E3V3: 91					
Compressor	Quantity				1					
	Type				Hermetically sealed swing compressor					
Operation range	Heating	Ambient	Min.~Max.	°CWB	-25 ~ 25	-25 ~ 35	-25 ~ 25	-25 ~ 35	-25 ~ 25	-25 ~ 35
		Water side	Min.~Max.	°C	EV3: 9 ~ 65 / E3V3: 15 ~ 65					
	Cooling	Ambient	Min.~Max.	°CDB	-	10 ~ 43	-	10 ~ 43	-	10 ~ 43
		Water side	Min.~Max.	°C	-	5 ~ 22	-	5 ~ 22	-	5 ~ 22
	Domestic hot water	Ambient	Min.~Max.	°CDB	-27 ~ 35					
		Water side	Min.~Max.	°C	25 ~ 55					
Refrigerant	Type			R-32						
	GWP			675						
	Charge			kg						
	Charge			TCO2Eq						
	Control			Expansion valve						
Sound power level	Heating	Nom.		dBA	58		60		62	
Power supply	Name/Phase/Frequency/Voltage			Hz/V	V3/1~/50/230					
Current	Recommended fuses			A	20				25	

(1) Cooling Ta 35°C - LWE 18°C (DT=5°C), Heating Ta DB/WB 7°C/6°C - LWC 35°C (DT=5°C) (2) Cooling Ta 35°C - LWE 7°C (DT=5°C), Heating Ta DB/WB 7°C/6°C - LWC 55°C (DT=5°C). This product contains fluorinated greenhouse gases.

*Domestic hot water in combinations with stainless steel tank EKHWS(P)(U)-D and ECH₂O thermal store EKHWP-(P)B.

Daikin Altherma 3 M (11-14-16 kW)

The power pact



The Daikin Altherma 3 M is the Daikin's first third generation monobloc, benefiting from a new design and using the R-32 refrigerant.

КАЛИМАХАНИК

Compact improved design

A redesigned casing

The black front grill made of horizontal lines is hiding the fan from view, reducing the perception of the sound produced by the unit.

The light grey casing is slightly reflecting the environment where the unit is installed, helping it to blend in in any decor.

A single fan for high capacity units

The single fan is slightly larger, replacing the usual double fan for high capacity units. The shape of the fan has also been reviewed to reduce the contact surface with air therefore lower the sound level by improving the air circulation.



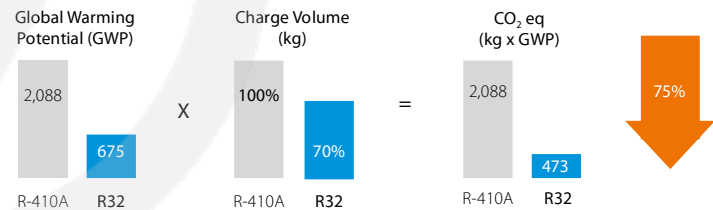


R-32 monobloc

Daikin is a pioneer in launching heat pumps equipped with R-32. With a lower Global Warming Potential (GWP), the R-32 is equivalent in power to standard refrigerants, but achieves higher energy efficiency and lower CO₂ emissions. Easy to recover and reuse, R-32 is the perfect solution for attaining the new European CO₂ emission targets.

Reduced environmental impact: CO₂eq > 75% reduction

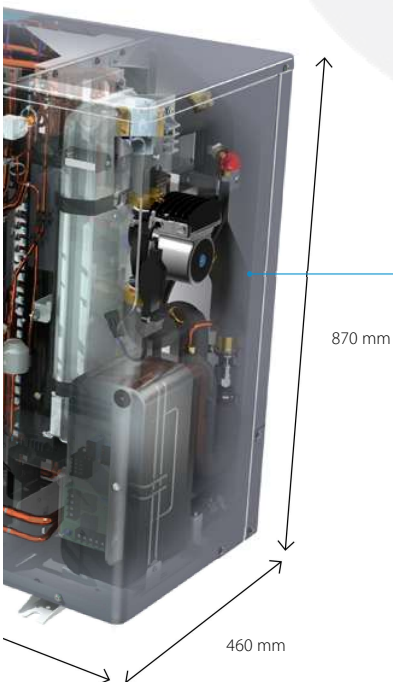
- GWP: R410A: 2,088 > R32: 675
- 30% less refrigerant charge needed



R-32 **BLUEvolution**

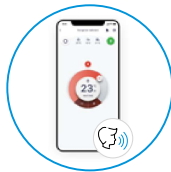
A simple solution to space limitation

Thanks to the monobloc set-up, no indoor unit is required which helps when space is limited inside. The monobloc can even fit under a window!



Fully connected

The Daikin Altherma 3 M also finds its power in Daikin Altherma total solution, including controls, heat collectors and heat emitters.



Onecta App, with voice control

- Control the heating system from home or remote via smartphone
- Control the heating system with the voice
- Include integrations with Google Assistant and Amazon Alexa
- Featuring other functions: scheduling and holiday mode, control multiple units and boosting mode, monitoring energy consumption...



Cloud ready with WLAN option



Madoka, user-friendly wired room thermostat

- Sleek and elegant design
- Intuitive touch-button control
- Three colours to match any interior (white, black and silver-grey)
- Compact, measures only 85 x 85 mm



Heating and cooling emitters

As a mid-temperature heat pump, the Daikin Altherma 3 M fits perfectly with any type of emitters such as fan coils, underfloor heating or heat pumps convectors.

Man-machine interface

Inspired from the design awarded Daikin Altherma third generation interface of indoor units, this new controller gathers all benefits:

**✓ The Daikin Eye**

The intuitive Daikin eye shows you in real time the status of the system. Blue is perfect! Should the eye turn red, an error has occurred.

✓ Quick to configure

Log in and you'll be able to completely configure the unit via the new interface in less than 10 steps. You can even check if the unit is ready for use by running test cycles!

✓ Easy operation

Work super-fast with the new interface. It's super easy to use with just a few buttons and 2 navigational knobs.

✓ Beautiful design

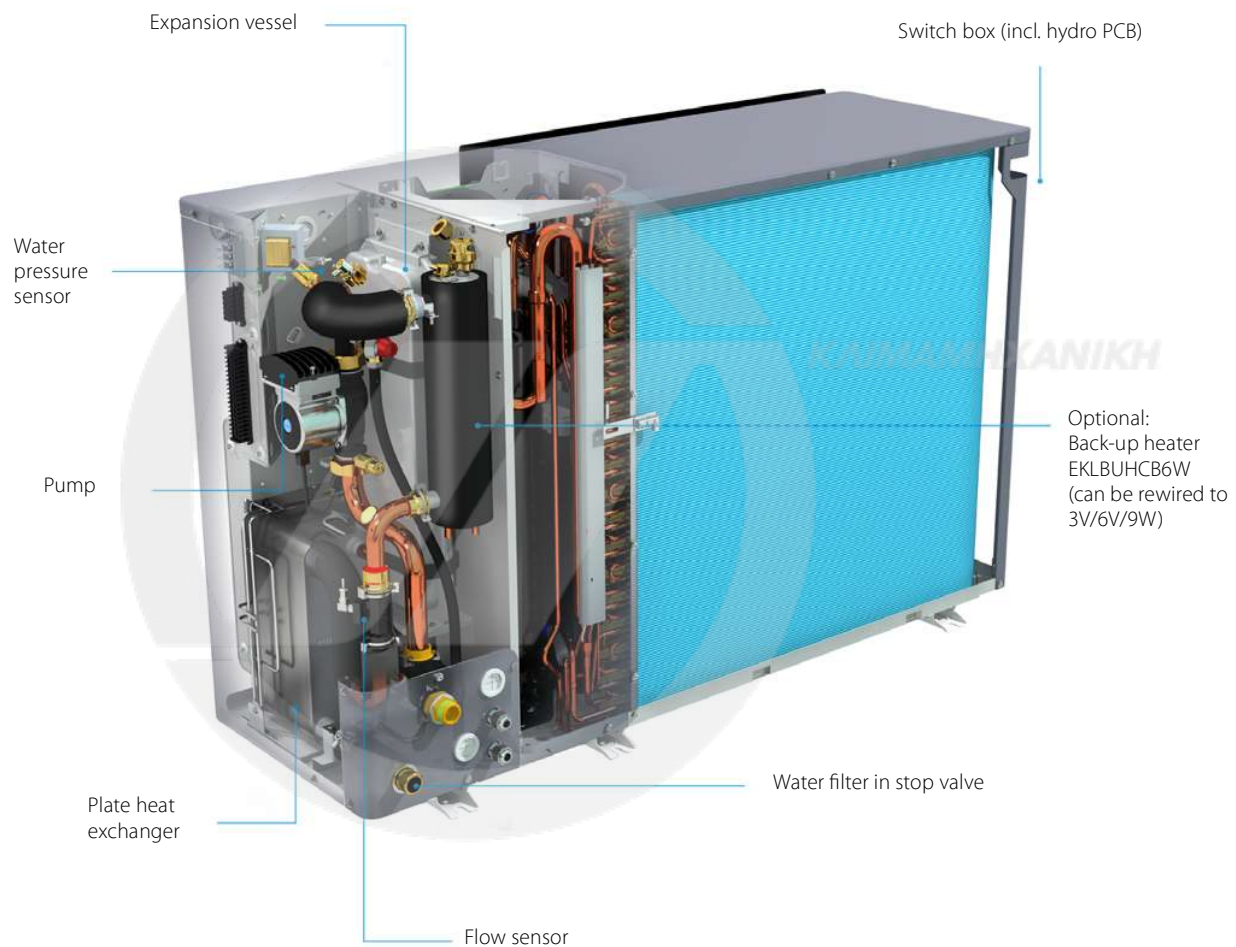
The interface was especially designed to be very intuitive. The high contrasted colour screen delivers stunning and practical visuals that really help you as installer or service engineer.

✓ WLAN cartridge connection**✓ Discreet thanks to small dimensions**
H x W x D 136 x 160 x 37 mm**Domestic hot water production**

The Daikin Altherma 3 M monobloc combines with stainless steel tanks (EKHWS(P)-D) and thermal stores and panels (EKHWP) to provide efficient domestic hot water.

Straight forward installation & maintenance

The Daikin Altherma 3 M also gets its power from inside by including all hydraulic components into one single unit.



Comfort and premium performance

The Daikin Altherma 3 M shows improved performances as well as a wide product range.

Extended product range

- Heating only models (EDLA*)
- Reversible models providing cooling (EBLA*)
- One-phase models (EB/DLA-DV*)
- Three-phase models (EB/DLA-DW*)
- Back-up heater models (EB/DLA-D3V/D3W)
- Back-up heater less models (EB/DLA-D/DW)
- All available in 9, 11, 14 and 16 kW

Improved performances

- Up to 
- Operation down to -25°C outside temperature
- Guaranteed heating capacities down to -20°C
- Delivers LWT 60°C at -7°C
- Suitable for renovations, replacement, and large new buildings

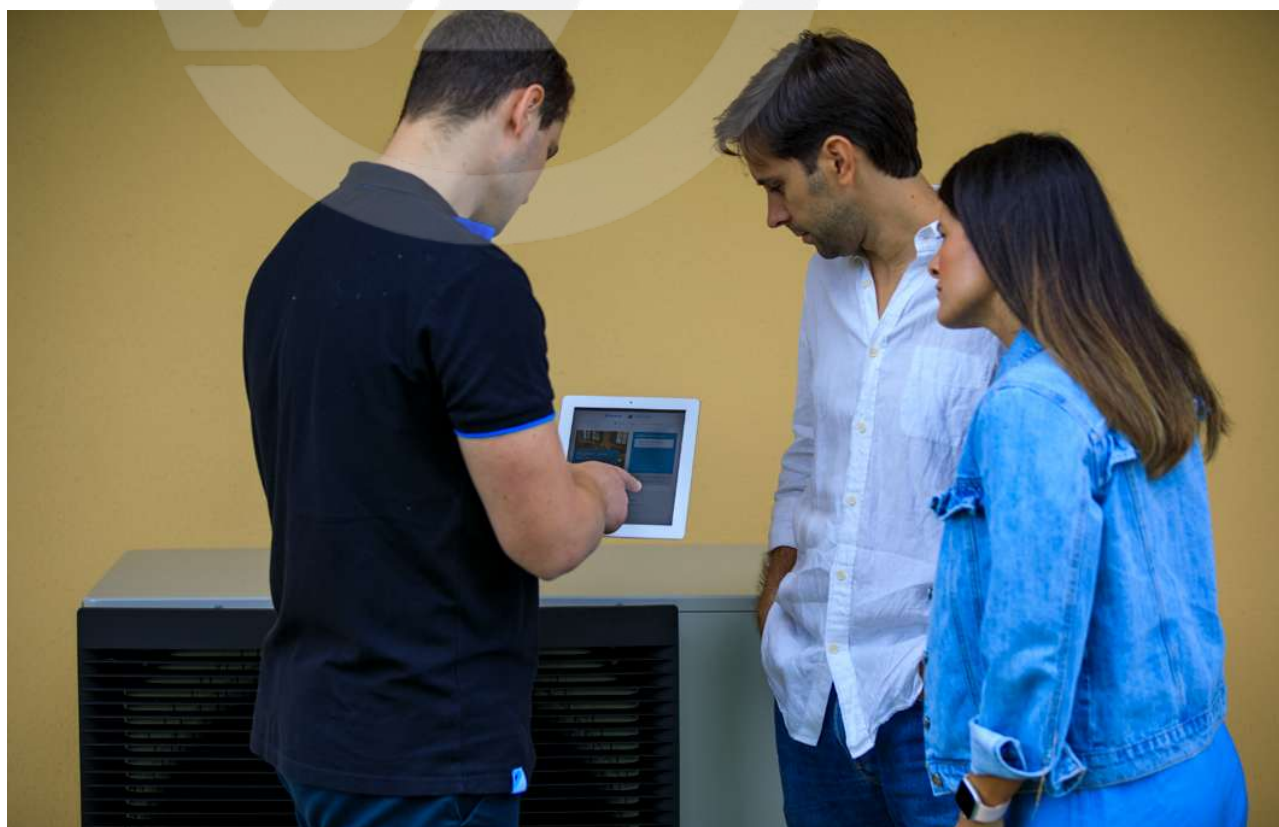
Flexibility in domestic hot water production

- Combination with stainless steel domestic hot water tank (EKHWS(P)(U)-D)
- Combination with ECH₂O thermal store to provide domestic hot water with support from the sun

Perfect match with any heat emitters

- Combination with underfloor heating applications
- Combination with heat pump convectors Daikin Altherma HPC

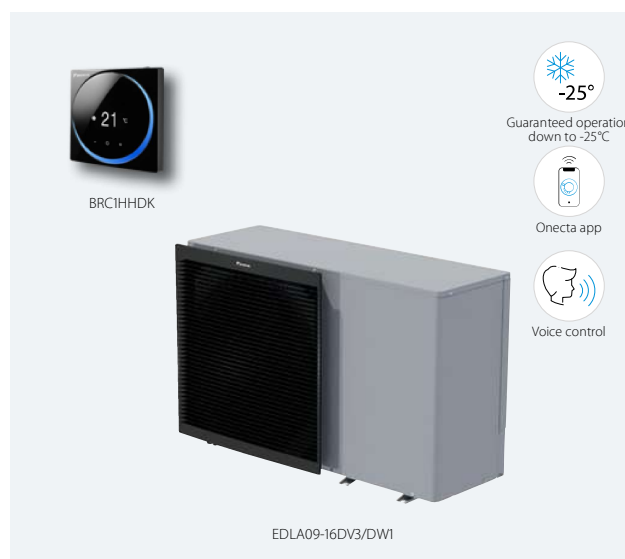
КАИМАМХАНИК



Daikin Altherma 3 M

Heating only air to water monobloc system,
ideal when indoor space is limited

- W-LAN cartridge connection (optional)
- Possible to combine with domestic hot water tanks
- Heating only air-to-water heat pump
- Monobloc all-in-one concept including all hydraulic parts
- Available with Built-in 3 kW electric back-up heater for additional heating or with a separate back-up heater kit
- Available in one phase and three phase



011-1W0423 → 426



EDLA09-14DV3



EDLA09-14D3V3



EDLA09-14DW1



EDLA09-14D3W1



EDLA-DV37




EDLA-DW17



EDLA-D3V37



EDLA-D3W17

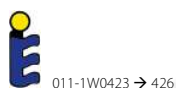
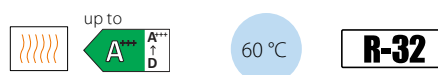
Single Unit			EDLA	09D(3)V3/D(3)W1	11D(3)V3/D(3)W1	14D(3)V3/D(3)W1	16D(3)V3/D(3)W1	
Heating capacity	Nom.		kW	9.37 (1)/9.00 (2)	10.6 (1)/9.82 (2)	12.0 (1)/12.5 (2)	16.0 (1)/16.0 (2)	
Power input	Heating	Nom.	kW	1.91 (1)/2.43 (2)	2.18 (1)/2.68 (2)	2.46 (1)/3.42 (2)	3.53 (1)/4.56 (2)	
COP				4.91 (1)/3.71 (2)	4.83 (1)/3.66 (2)	4.87 (1)/3.64 (2)	4.53 (1)/3.51 (2)	
 Space heating	Average climate water outlet 55°C	General	ηs (Seasonal space heating efficiency)	133	130	132	130	
			SCOP	3.39	3.32	3.37	3.33	
	Average climate water outlet 35°C	General	Seasonal space heating eff. class					
			ηs (Seasonal space heating efficiency)	186	182			
			SCOP	4.72	4.64	4.62		
			Seasonal space heating eff. class					
Casing	Colour	Silver						
	Material	Polyester painted galvanised steel plate						
Dimensions	Unit	HeightxWidthxDepth	mm	870x1,380x460				
Weight	Unit	DV3/DW1: 147, D3V3/D3W1: 149						
Compressor	Quantity	1						
	Type	Hermetically sealed swing compressor						
Operation range	Heating	Ambient	Min. ~ Max.	°CWB				
		Water side	Min. ~ Max.	°C				
	Domestic hot water	Ambient	Min. ~ Max.	°CDB				
Water side		Min. ~ Max.	°C					
Refrigerant	Type	R-32						
	GWP	675						
	Charge	kg						
	Charge	TCO2Eq						
	Control	Expansion valve						
Sound power level (3)	Heating	Nom.	dBA	62				
Power supply	Name/Phase/Frequency/Voltage			V3/1 ~ /50/230 - W1/3 ~ /50/400				
Current	Recommended fuses			A				

(1) Ta DB/WB 7°C/6°C - LWC 35°C (DT = 5°C) | (2) Ta DB/WB 7°C/6°C - LWC 45°C (DT = 5°C) | (3) According to EN14825
This product contains fluorinated greenhouse gases.

Daikin Altherma 3 M

Reversible air to water monobloc system,
ideal when indoor space is limited

- W-LAN cartridge connection (optional)
- Possible to combine with domestic hot water tanks
- Heating and cooling air-to-water heat pump
- Monobloc all-in-one concept including all hydraulic parts
- Available with Built-in 3 kW electric back-up heater for additional heating or with a separate back-up heater kit
- Available in one phase and three phase



011-1W0423 → 426



EBLA09-14DV3



EBLA09-14D3V3



EBLA09-14DW1



EBLA09-14D3W1



EBLA-DV37





EBLA-DW17



EBLA-D3V37



EBLA-D3W17

Single Unit				EBLA	09D(3)V3/D(3)W1	11D(3)V3/D(3)W1	14D(3)V3/D(3)W1	16D(3)V3(7)/D(3)W1(7)
Heating capacity	Nom.			kW	9.37 (1)/9.00 (2)	10.6 (1)/9.82 (2)	12.0 (1)/12.5 (2)	16.0 (1)/16.0 (2)
Power input	Heating	Nom.		kW	1.91 (1)/2.43 (2)	2.18 (1)/2.68 (2)	2.46 (1)/3.42 (2)	3.53 (1)/4.56 (2)
COP					4.91 (1)/3.71 (2)	4.83 (1)/3.66 (2)	4.87 (1)/3.64 (2)	4.53 (1)/3.51 (2)
Cooling capacity	Nom.			kW	9.35 (3)/9.10 (4)	11.6 (3)/11.5 (4)	12.8 (3)/12.7 (4)	14.0 (3)/15.3 (4)
Power input	Cooling	Nom.		kW	2.79 (3)/1.71 (4)	3.56 (3)/2.17 (4)	4.06 (3)/2.51 (4)	4.58 (3)/3.24 (4)
EER					3.35 (3)/5.34 (4)	3.26 (3)/5.31 (4)	3.16 (3)/5.04 (4)	3.06 (3)/4.74 (4)
SEER					5.62 (5)	5.79 (5)	5.71 (5)	5.59 (5)
 Space heating	Average climate water outlet 55 °C	General	η _s (Seasonal space heating efficiency)		135	132	134	132
			SCOP		3.44	3.37	3.42	3.37
	Average climate water outlet 35 °C	General	η _s (Seasonal space heating efficiency)		190	186	185	
			SCOP		4.82	4.73	4.70	4.69
				Seasonal space heating eff. class				
Casing				Colour	Silver			
				Material	Polyester painted galvanised steel plate			
Dimensions	Unit	HeightxWidthxDepth		mm	870x1,380x460			
Weight	Unit			kg	DV3/DW1: 147, D3V3/D3W1: 149			
Compressor	Quantity				1			
				Type	Hermetically sealed swing compressor			
Operation range	Heating	Ambient	Min. ~ Max.	°CWB	DV3(7)/DW1(7): -25 ~ 25, D3V3(7)/D3W1(7): -25 ~ 35			
		Water side	Min. ~ Max.	°C	DV3(7)/DW1(7): 9 ~ 60, D3V3(7)/D3W1(7): 15 ~ 60			
	Cooling	Ambient	Min. ~ Max.	°CDB	10 ~ 43			
		Water side	Min. ~ Max.	°C	5 ~ 22			
Refrigerant	Domestic hot water	Ambient	Min. ~ Max.	°CDB	-25 ~ 35			
		Water side	Min. ~ Max.	°C	25 ~ 55			
	Type				R-32			
	GWP				675			
				Charge	kg	3.80		
				Charge	TCO ₂ Eq	2.57		
				Control	Expansion valve			
Sound power level (5)	Heating	Nom.		dBA	62			
Power supply	Name/Phase/Frequency/Voltage			Hz/V	V3/1 ~ /50/230 - W1/3 ~ /50/400			
Current	Recommended fuses			A	32/16			

(1) Ta DB/WB 7°C/6°C - LWC 35°C (DT = 5°C) | (2) Ta DB/WB 7°C/6°C - LWC 45°C (DT = 5°C) | (3) Cooling: EW 12°C; LW 7°C; ambient conditions: 35°CDB | (4) Cooling: EW 23°C; LW 18°C; ambient conditions: 35°CDB | (5) According to EN14825. This product contains fluorinated greenhouse gases.